

Always listen to the experts. They'll tell you what **can't** be done and **why**.

Then do it.
~ Robert Heinlein



5627 University Way NE • Seattle • 206.527.4822 • www.rodcycle.com

R+E CYCLES NEWS • THE NEWSLETTER OF CYCLING VALUES! MARCH 2007

BEHIND THE SCENES

Spring is here, and the season is already in full swing even before Seattle Bike Expo.

The following pages will give you a glimpse of what was going on behind the scenes at R+E Cycles this winter, as well as a good look at the 2007 line of Rodriguez Bicycles. This is a big newsletter, so you'll want to warm up your coffee to properly enjoy.

The winter at R+E Cycles is always a time for improvements. Last winter saw huge change as we reinvented the way we make bikes and created from the ground up a whole new software system for fitting bikes.

This winter seemed a bit more subdued on the surface, but behind the scenes, there was a lot going on.

A Work of Art:

The change that you will notice the most in the store is the new NEXT-fit adjustable bike. The one we had was 10 years old, and not designed for the amount of use that we were putting it through. When we made the first one, our intention was to only use it a few times per week for custom bike sales. Read more about this amazing new product on [page 5](#).

Website updates:

This winter was also a time for updating our website to highlight some of the things we are doing now. We've added

many new features to www.rodcycle.com, as well as built 2 new websites that highlight the Trillium custom bicycles (www.trilliumcycles.com) and also the NEXT-fit system (www.next-fit.com). For details on these websites see [page 7](#) (or just go to the website).

Software updates:

Of course Scott and I were busy updating the Next-fit™ software for the coming year. Most of the improvements made in the software this winter address internal efficiency and communication issues for accurate book keeping. Not too exciting to describe here, but rest assured we're excited about the updates.

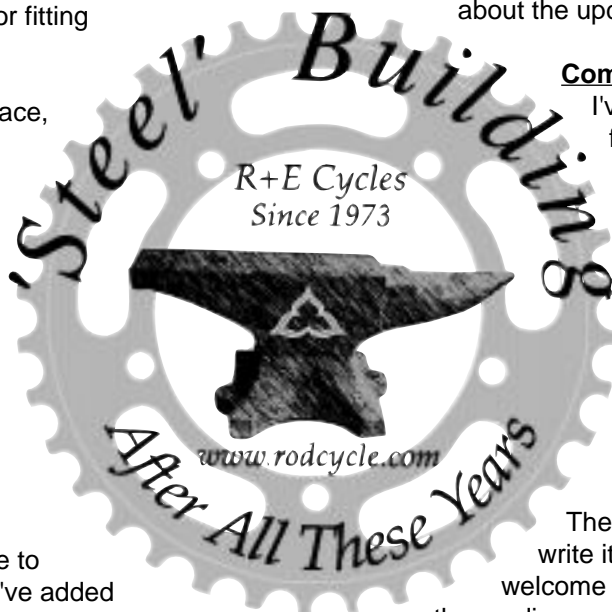
Computer updates:

I've been putting off updating our computer hardware for about 6 years now (my main computer is a 1997 model). We run 12 computers, 6 printers, a few scanners, and lots of outdated software. This winter I am performing the first step in updating all of this old hardware. Read more on [page 9](#).

Just Your Size:

2007 marks our second year of offering 15 production sizes in our Rodriguez bike line, more than any other manufacturer. Read more on [page 3](#).

There is just too much great stuff in this newsletter to write it all here, so I'll stop my yammering and just welcome you to the 2007 season, and let you get on with the reading.



HOURS
Monday ~ Closed
Tuesday - Friday 12 ~ 6
Saturday - 10 ~ 5
Sunday ~ Closed
by Appointment ~ anytime

R+E CYCLES
5627 University Way NE
Seattle, WA, 98105
206-527-4822
fax 206-527-8931
email Sales@rodcycle.com

R+E Cycles -
The only shop around with a real coffee shop built right in. If you would like to plan a ride that incorporates the R+E Cycles coffee shop, just call ahead and we're always happy to accommodate your group.

HAVE A DRINK ON US

All you have to do is spend \$10 or more in R+E Cycles, and then you can use this coupon for a coffee drink of your choice in our coffee shop.

One coupon per customer

FREE COFFEE DRINK

Limited to stock on hand. No cash value. Expires 4/21/2007

LOCKED IN CONFLICT?

A few years ago the U-lock industry took a huge beating because of a video on the internet. It seems that the key system was easy to pick with a ball point pen. This is not a good feature in a bike lock. Well, since that time people have been locked in conflict about the best way to secure their prized possessions. The good news is, the U-lock is now back in contention with a brand new key system. Use this coupon to get a full sized knox U-Lock for 1/2 price!

Reg. \$25

With Coupon Just \$12.50

Limit 2 per customer

Limited to stock on hand. No cash value. Expires 4/21/2007

CHIRPIN' LIKE A BIRD?

If you're bike is chirpin' like a bird, it's probably because your chain is drier than dirt! Do your riding buddies a favor and lube that sucker up! We'll even help you out with a 30% discount on Triflow. Reg. \$5 2oz bottle

With Coupon Just \$3.50

Limited to stock on hand. No cash value. Expires 4/21/2007

PRSRT STD
US Postage
PAID
Seattle, WA
Permit No. 231

SPORT

Hey! What's going on here??

You just want a comfortable riding bike for riding STP, a few entry level triathlons, or some weekend club rides, but everyone's trying to sell you an aluminum bridge truss? The Rodriguez Sport is for you.

The Rodriguez Sport is our biggest seller. The frame is hand crafted from the lightweight OX Platinum tubing. It comes in 3 different component configurations for 2007, including a flat bar option. It includes a rear rack braze-on (something most modern sport bikes leave out) as well as a triple crank set (something no Seattleite should be without!). This bike rides light, fast, and provides both comfort as well as versatility. You won't find a better hand crafted bike anywhere near the price of the Rodriguez Sport and SL bikes.

COMFORT

This bike is perfect for getting into shape, doing triathlons, organized rides, commuting, or just havin' fun. If you're looking for a comfortable yet quick riding bike that fits great and is affordable, this is one to check out!

- True Temper OX Platinum tubing
- Profile carbon fiber fork
- Available in 15 sizes (read more on page 3) to fit men and women (custom for just a \$200 upgrade)
- Available in 4 color choices instead of just one (custom paint upgrade also available)
- Four different decal options

VALUE



- Tube Set
- Fork
- Shift Levers
- Brakes
- Bottom Bracket
- Cranks
- Front Derailleur
- Rear Derailleur
- Hubs
- Rims
- Spokes
- Tires
- Handle Bars
- Head Set
- Tape
- Seat Post
- Saddle

Rodriguez Sport Flat Bar
\$2,199

OX Platinum
Profile carbon fiber
SRAM X-7 trigger
Tektro Dual pivot
FSA Omega MegaExo
FSA Omega MegaExo
SRAM X-7
SRAM X-7
Shimano 105
Shimano 105
DT 14G
Serfas Seca
Alloy Flat Bars
Cartridge Sealed
ATB Grips
Alloy
WTB or Planet Bike

Rodriguez Sport Mirage
\$2,099

OX Platinum
Profile carbon fiber
Campagnolo Mirage Ergo 9x
Tektro Dual pivot
FSA Omega MegaExo
FSA Omega MegaExo
Campagnolo Champ Triple
Campagnolo Champ Triple
Formula Sealed Bearing
Velocity Aerohead
DT 14G
Serfas Seca
Profile H2O
Cartridge Sealed
Cinelli Cork
Alloy
WTB or Planet Bike

SL Veloce
\$2,699

OX Platinum
Profile carbon fiber
Campagnolo Veloce Ergo 10x
Campagnolo Veloce
FSA Omega MegaExo
FSA Omega MegaExo
Campagnolo Comp Triple
Campagnolo Comp Triple
Easton Vista
Easton Vista
Easton Vista
Serfas Seca
Profile H2O
Cartridge Sealed
Cinelli Cork
Origin 8 Carbon Fiber
WTB or Planet Bike

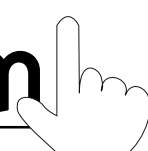
Campagnolo



Rodriguez

for more information and color photos visit us on the web

at www.rodcycle.com



Team Rodriguez



Ele with her Rodriguez Sport bike after conquering Stevens Pass during her first Courage Classic. Read her story in our online customer scrapbook at www.rodcycle.com

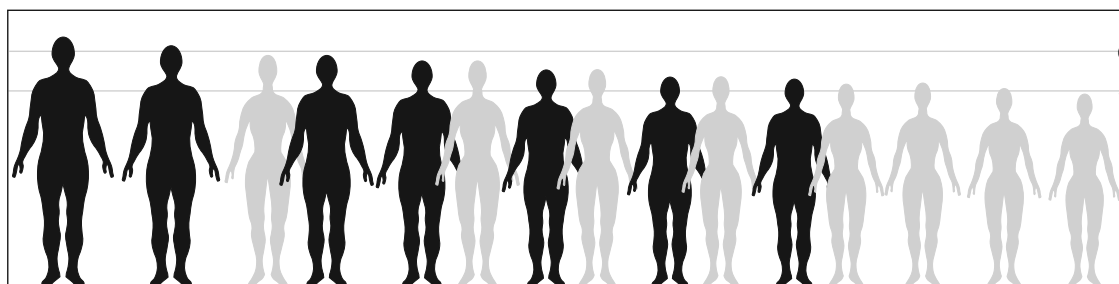
JUST YOUR SIZE

If a bike doesn't fit right, it's not going to be ridden. A bike not ridden is a very sad bike. Our efforts at Rodriguez Bicycles to prevent the creation of very sad bikes has been nonstop since the 1970's.

Along with the development of the NEXT-fit™ software system came the realization that we could fit 90 to 95% of our customers if we built our Rodriguez bicycles in 15 sizes instead of just 10. With the improvements we made in our frame shop last winter, we no longer have to batch similar sizes and types of bicycles together when we manufacture them (see March 2006 Newsletter). This enables us to build 15 production sizes as easily as we could build 6 sizes (like other builders).

Rodriguez Bicycles are offered in 15 production sizes, in addition to our custom offerings. The improvements didn't end there though. Our new manufacturing method smoothed out things in our paint shop as well. This allows us to offer more choices in paint and decals at no extra charge. Any production bike can be painted one of 4 paint jobs, with your choice of 4 different decal styles (of course custom paint is still an option as always).

How about that? 15 sizes, 4 colors, 4 different decal options, and lighter weight, stronger tubing for every production bike we make and no upgrade charges? Add to this the NEXT-fit™ software system of fitting, and you've got the best lineup we've ever offered!

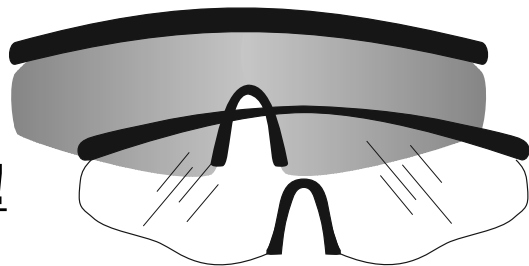


for more information about our fitting and sizing, visit us online at www.rodcycle.com

EYE SORE?

Maybe not now, but you will have sore eyes if you don't use proper protection! Use this coupon to get 2 pair of sunglasses for the price of one at R+E Cycles. Get a pair of tinted, and a pair of clear and then you'll have no excuses not to ride even if it's not sunny outside. Reg. \$20

**2 for 1
Sunglasses!**



Limited to stock on hand. No cash value. Expires 4/21/2007

DOES YOUR BACK LOOK LIKE A JACKSON POLLACK PAINTING?



Even in the spring it can rain a bit around here. You don't always want fenders on the bike though do you? What to do, what to do, what to do..... I've got it! Why don't you head down to R+E Cycles for a set of Speedez easy on-easy off fenders? These babies whip on and off in seconds. That way you can look cool on the days with no rain, and your back will stay nice and clean on those 'not so dry days'. Reg. \$34.99

With Coupon Just \$29.99

Limited to stock on hand. No cash value. Expires 4/21/2007

THE SHIRT OFF OUR BACK

We're going to sell you the shirt off our back! That's right, now you too can look as stylin' as we here at R+E Cycles with the same official garb we wear. This year available in Navy or Gray! Reg. \$29.99
With coupon just \$19.99

**A Fashion Upgrade
for any wardrobe
Just \$19.99**



Limited to stock on hand. No cash value. Expires 4/21/2007

A THIRST FOR CYCLING!

I know how it goes. You got your bike ready for the season, the sun came out, and off you go on your first ride of the season. Too bad those old beat up bottles don't look as good as you do in your sweet new R+E T-shirt and spandex shorts. Well, we'll help you out with that as well. Purchase any Blackburn Stainless Steel Chicane water bottle cage (\$15) and we'll throw in a brand new R+E Cycles water bottle. The Chicane won't stain, so your bottle will stay looking good. \$4 value



FREE BOTTLE

Free is a VERY good price!

Limited to stock on hand. No cash value. Expires 4/21/2007

WORKIN' ON THE CHAIN GANG!

Use this coupon to get a Park chain cleaning system for just \$35.99. Minimize your mess and impress all of your riding buddies with the cleanest chain of the group! Reg. \$40

Hurry, supply is limited!



SAVE 10%

Limited to stock on hand. No cash value. Expires 4/21/2007

WRAPPIN' WITH BOYS.....

...at Seattle Bike Repair! Nobody wraps like the guys at SBR, and I'm sure that most of you out there are about due for a good wrap, so why not take advantage of this great special, get your bars lookin' great and save a little money in the process? We'll do the labor for just \$12.50 (reg. \$25) when you buy any Cinelli or Fizik bar wrap (\$19-\$20). Limited to stock on hand.



SAVE 10%

Limited to stock on hand. No cash value. Expires 4/21/2007

UTILITY

Fenders, front and rear racks, big wide tires, bomb proof fork, these are no problem for the Rodriguez Adventure Touring bike. This is a comfortable, classic touring bike with modern as well as old school conveniences.

TOURING

We started building these again when the bike industry gave up on making well designed touring bikes. This bike is a class act right down to the stainless steel bottle opener on the seat stay. Whether you are planning an extended bicycle tour, or commuting to and from work, this bike is for you!

Our touring bikes are made from lightweight, comfortable riding OX platinum tubing. Our customers ride their touring bikes alot, so all of the components are selected for their quality and ability to be repaired as needed. This year we're offering the Adventure with the Ultimate component package which includes Phil Wood hubs and Phil Wood bottom bracket.

COMMUTING

- True Temper OX Platinum tubing
- Available in 15 sizes (read more on page 3) to fit men and women (custom for just a \$200 upgrade)
- Available in 4 color choices instead of just one (custom paint upgrade also available)
- Four different decal options



	Adventure Flat Bar \$2,299	Adventure Mirage \$2,199	Adventure Veloce \$2,799	Adventure Ultimate \$3,199
Tube Set	OX Platinum	OX Platinum	OX Platinum	OX Platinum
Fork	Steel	Steel	Steel	Steel
Shift Levers	SRAM X-7 trigger	Campagnolo Mirage 9x	Campagnolo Veloce 10x	Campagnolo Veloce 10x
Brake Levers	Tektro ATB	Campagnolo Mirage	Campagnolo Veloce	Campagnolo Veloce
Brakes	Tektro Cantilever	Tektro Cantilever	Tektro Cantilever	Tektro Cantilever
Bottom Bracket	Shimano Sealed	Shimano Sealed	Shimano Sealed	Phil Wood
Cranks	Alloy 28/38/48	Alloy 28/38/48	Alloy 28/38/48	Alloy 28/38/48
Front Derailleur	SRAM X-7	Shimano Triple	Shimano Triple	Shimano Triple
Rear Derailleur	SRAM X-7	Campagnolo Champ	Campagnolo Comp	Campagnolo Comp
Chain	SRAM PG91	Campagnolo C9	Campagnolo Veloce	Campagnolo Veloce
Hubs	Shimano 105	Campagnolo Veloce	Campagnolo Veloce	Phil Wood
Rims	Velocity Dyad	Velocity Dyad	Velocity Dyad	Velocity Dyad
Spokes	DT 14G	DT 14G	DT 14G	DT 14G
Tires	Serfas Kevlar Belted	Serfas Kevlar Belted	Serfas Kevlar Belted	Serfas Kevlar Belted
Handle Bars	Alloy Flat Bar	Profile H2O	Profile H2O	Profile H2O
Head Set	Cartridge Sealed	Cartridge Sealed	Cartridge Sealed	FSA Orbit Equipe
Tape/Grips	ATB Grips	Cinelli Cork	Cinelli Cork	Cinelli Cork
Saddle	WTB or Serfas	WTB or Serfas	WTB or Serfas	WTB or Serfas

for more information and color photos visit us on the web

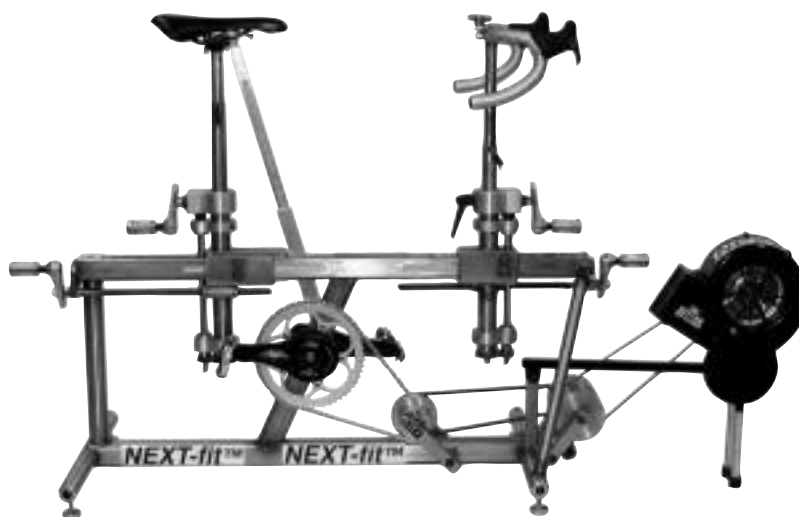
at www.rodcycle.com

Team Rodriguez



Matt on his custom sized Rodriguez Adventure tearing up the streets of Seattle. Read his story in our online customer scrapbook at www.rodcycle.com

"IT'S A WORK OF ART"



"A work of art"

That's how a customer just described our NEXFIT™ Adjustable Fit Bike when I showed it to him. We couldn't agree more. It took all of Dennis' ingenuity, and a lot of trial and error, but this is the most advanced adjustable fitting tool that has ever been created.

Our 2007 NEXFIT™ bike is designed for accuracy, ease of operation, and extreme durability. It is designed for the professional who will use it several times a day and cannot afford to have it break down. It incorporates methods of adjustment that you would see on a heavy duty milling machine instead of a bicycle. It's made from heavy duty stainless steel, and uses all industrial grade parts. All fit adjustments are made with the turn of a handle while the rider is pedaling the bike. Now, reproducing the 'previous' position is as easy as turning a handle and can be done while the cyclist is still riding and warmed up. It also fits more riders now. We can fit people from about 4'3" to 7' 2".

Visit the shop or see the bike online at www.next-fit.com

TIME TO RETIRE!

So, you're ready to retire but you haven't saved enough money yet? R+E Cycles to the rescue! Use this coupon to get 1/2 off the installation price (reg. \$10 each) when you purchase any pair of tires at R+E Cycles. With that kind of savings, you can afford to retire!



SAVE \$10

Limited to stock on hand. No cash value. Expires 4/21/2007

USE YOUR HEAD!

If you read the owner's manual for your bike helmet, then you know that your helmet is ruined if you've ever crashed in it. Even if you've never crashed in your helmet, there's still plenty of good reasons to buy a new one.....like.....uhm.....you got a new bike and your helmet is the wrong color.....uhm.....the old one smells like sweat.....oh ya, the best reason of all is that R+E Cycles has helmets on sale now! 10% off any helmet with this coupon.



SAVE 10%

Limited to stock on hand. No cash value. Expires 4/21/2007

BLUE AND WHITE IS OUTA' SIGHT!

No, it's not a thinly veiled reference to the Blue and White G3's I just installed in the office, but is indeed a last ditch effort to rid ourselves of 2 Blue and White Giro Eclipse helmets that really need to be out in the sun. We have 2 size medium that for some reason have been hangin' around a while. So, if you think Blue and White is outa' sight, and medium is your head size, we've got you covered. Reg. \$90



With Coupon Just \$38!

Limited to stock on hand. No cash value. Expires 4/21/2007

BUMPS ON YOUR RUMP?

You've tried everything and your still not comfortable? Use this coupon to get a Tamer shock absorber seat post for 50% off at R+E Cycles. People love them in tandems and single bikes too. Limited to stock on hand. REG. \$45



With Coupon Just \$22.50!

Limited to stock on hand. No cash value. Expires 4/21/2007

LIGHTEN YOUR LOAD!

Make your ride more comfortable and lighten your bike with an Origin 8 Carbon seat post. 27.2 size only. Reg. \$65

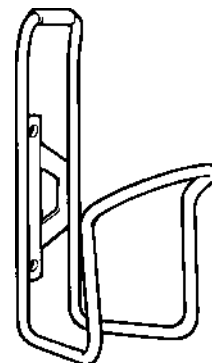


With Coupon Just \$55!

Limited to stock on hand. No cash value. Expires 4/21/2007

COLOR MY WORLD

With Dimension assorted colors water bottle cages. Do you like to mix it up a little? Well, now you can set your bike up with any number of assorted color water bottle cages and save 50% at the same time. Reg. \$6 each



With Coupon Just \$2.99!

Limited to stock on hand. No cash value. Expires 4/21/2007

ADVENTURE

TRAVEL

This bike has become a standard in the industry for the 'go everywhere' traveler. The Rodriguez W² Adventure is ready to conquer any terrain your heart desires. Originally designed in 1996 for Bicycle Adventurer, columnist, and writer Willie Weir before his bicycle adventure in the Balkans, this bike can do anything. It is rugged, well designed and can pack easily into a 26" X 26" suitcase for airline travel.

The Rodriguez W² Adventure has many features that you won't find on any other bike.

This bike is set up to use whatever tire you might need to tackle the roughest roads (or non-roads). You can install from 1" slicks to 1.75" knobbies on the fly as needed.

Stand-over clearance is maximized because you never know when you'll have to stop short. Ultimate travel calls for Ultimate comfort! The sloping top tube provides a higher, more comfortable handlebar position. The bike is offered with drop or flat bars. The W² Adventure comes equipped with front and rear rack braze-ons so you can carry a mother-load of equipment, as well as 3 water bottle braze-ons. The W² Adventure comes with a lower gear range than other touring bikes, and a crank set that will even accept lower gears. The W² Adventure is equipped with S&S couplings. This means it can easily be packed into a 26" by 26" suitcase (sold separately)

- True Temper OX Platinum tubing
- Available in 15 sizes (read more on page 3) to fit men and women (custom for just a \$200 upgrade)
- Available in 4 color choices (custom paint upgrade also available)
- Four different decal options



Willie Weir - The Ultimate Traveler
on his Rodriguez W² Adventure



VERSATILE



W² Adventure Flats
\$2,799

W² Adventure Mirage
\$2,799

W² Adventure Veloce
\$3,399

W² Adventure Ultimate
\$3,799

Tube Set
Fork
Shift Levers
Brake Levers
Brakes
Bottom Bracket
Crank
Front Derailleur
Rear Derailleur
Chain
Hubs
Rims
Spokes
Tires
Handle Bars
Head Set
Tape/Grips
Saddle

OX Platinum
Aluminum
SRAM X-7 Trigger
Tektro ATB
Tektro Cantilever
Shimano Sealed
Alloy 28/38/48
SRAM X-7
SRAM X-7
SRAM PC951
Velocity Sealed Bearing
Velocity Aeroheat
DT 14G
Serfas Barista
Alloy Flat Bars
Cartridge Sealed
ATB Grips
WTB or Serfas

OX Platinum
Aluminum
Campagnolo Mirage 9x
Campagnolo Mirage
Tektro Cantilever
Shimano Sealed
Alloy 28/38/48
Shimano Triple
Campagnolo Champ
Campagnolo C9
Velocity Sealed Bearing
Velocity Aeroheat
DT 14G
Serfas Barista
Profile H2O
Cartridge Sealed
Cinelli Cork
WTB or Serfas

OX Platinum
Aluminum
Campagnolo Veloce 10x
Campagnolo Veloce
Tektro Cantilever
Shimano Sealed
Alloy 28/38/48
Shimano Triple
Campagnolo Comp
Campagnolo Veloce
Velocity Sealed Bearing
Velocity Aeroheat
DT 14G
Serfas Barista
Profile H2O
Cartridge Sealed
Cinelli Cork
WTB or Serfas

OX Platinum
Aluminum
Campagnolo Veloce 10x
Campagnolo Veloce
Tektro Cantilever
Phil Wood
Alloy 28/38/48
Shimano Triple
Campagnolo Comp
Campagnolo 10x
Phil Wood Cassette
Velocity Aeroheat
DT 14G
Serfas Barista
Profile H2O
Cartridge Sealed
Cinelli Cork
WTB or Serfas



Rodriguez

for more information and color photos visit us on the web

at www.rodcycle.com

Team Rodriguez

2005 Mt. Washington Auto Road
Bicycle Hillclimb



Joseph on his Rodriguez UTB during an incredible performance at the Mt. Washington Hill Climb. Read his story in our online customer scrapbook at www.rodcycle.com

TWO NEW PLAYGROUNDS IN TOWN

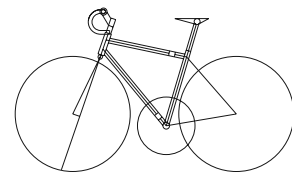
This winter we've been busy preparing photographs for the internet. Until this winter, I was the only one here that could run Photoshop to standardize the photos for the internet. This made it difficult to do a lot of photos because I also have to write all of the web pages, catalog, newsletter, ads, and software, that's all in addition to all of the bicycle projects that I am responsible for. This winter, I trained Amber to standardize photos, and then Amber trained Megan. So....we've got some great new photos for viewing, as well as 2 great new websites.

Trillium

Trillium is the name of our custom bicycle line. www.trilliumcycles.com is a website that highlights some of the exotic custom bikes that we've built

over the last year. Hope you have a high speed connection because the photos at trilliumcycles.com are high resolution and they are sweet!

NEXT fit™



Only at R+E Cycles • Seattle WA
www.rodcycle.com

www.next-fit.com

Next-fit™ is our complete bicycle fitting system. Over the last 30 years, we've become known for pioneering new methods of fitting people to bicycles. We've developed these methods in order to provide our customers the most comfortable, high performance bicycles possible. Over the last couple of years, professionals who offer bicycle fitting services have been approaching us with requests to purchase the fitting system that we use (our NEXT-fit™ system).

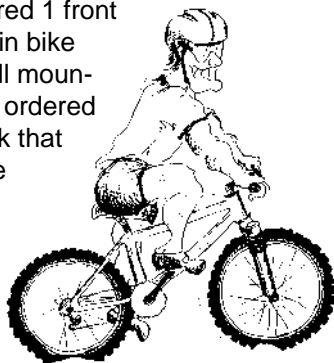
You asked for it, you got it!

This year, we've developed a package that will be available to other fitting professionals. Professionals interested in using our NEXT-fit™ system should visit www.next-fit.com for the details.

SMILEY'S ONE ONLY COUPON SPECIALS!!

ONE GREAT RACK!

A couple of years ago, we accidentally ordered 1 front rack designed specifically to fit on a mountain bike suspension fork. Unfortunately, we don't sell mountain bikes with suspension forks, so why we ordered it is a mystery to me. Anyway, it's a \$60 rack that we're going to let go for just \$10! That's one great price for one great rack!



JUST \$10!!

Limited to stock on hand. No cash value. Expires 4/21/2007

REMEMBER THE 1980'S?

I do! C'mon, don't you remember the snake skin boots (or shoe boots for you posers)? Totally awesome dude! Well, if you like Terry saddles, and you still kind of wish you could go out in public in your 1980's snake skin, here's a deal for you. We've got one snake skin Terry Liberator saddle left (probably from the 1980's) but it's brand new. Switch the iPod to your 'all whitesnake and Ratt' playlist, sit down on your killer new saddle and ride on! You'll have the same style and confidence you had in your 1980's snake skin, but no one will laugh at you because it will be under your....well....behind. Was \$40



JUST \$10!!

Limited to stock on hand. No cash value. Expires 4/21/2007

TIME TO SELLA THIS SELLE!

The Selle San Marco Island Saddle is a \$60 seat. Why we have it I don't know. someone obviously thought we needed one for stock, but it's been hanging around for 2 years, and I just want it to go. Call me crazy, but I'm going to sell this puppy for just \$25!!



With Coupon Just \$25!

SAVE \$35!!!

Limited to stock on hand. No cash value. Expires 4/21/2007

LIGHTEN YOUR DESK!

We've had a couple of these little bike light sculptures around the shop forever, and now we're giving them to you for \$10!! Reg. \$60

We've only got 1, so you must hurry!

**With Coupon
Just \$10!**

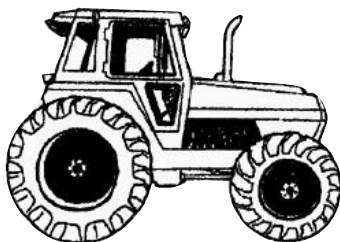
SAVE \$50!!!!



Limited to stock on hand. No cash value. Expires 4/21/2007

GOT A NEW TRACTOR?

We've got a seat for it! The Sella Royal Ultra-big, ultra-gel with springs. This seat is great for that 'I would ride if they made a great big seat like they used to' kind of person. Reg. \$50 (Only one, so hurry in!)



**With Coupon
Just \$10**

Limited to stock on hand. No cash value. Expires 4/21/2007

KNOX YOUR BLOX OX

Last and definitely least is the Knox Lock, mini U-lock. Don't know where, why or how, just know that we have one and it's priced to go. Reg. \$30



With Coupon Just \$8!

Limited to stock on hand. No cash value. Expires 4/21/2007

ESCAPE ARTIST

HOUDINI

It seems that several of our customers disappeared last summer!

Not to worry though, they've been returning with some remarkable stories of their experiences. It seems that they were disappearing to places like France, England, Spain, Italy, Boston, New York state, etc....

They took their lightweight, high performance Rodriguez bicycles with them. They spent days cycling the countryside, and evenings enjoying whatever culture the area had to offer.

The bike that made it all possible? The new, American made, Rodriguez Houdini line. The Houdini is not a touring bike, but a high performance Sport/Race bike that breaks down easily to fit into the same 26"X26" suitcase (sold separately) as our famous 'Ultimate Travel/Touring Bike'. This enables you to fly with your bike anywhere, avoiding the charges and nuisance of hauling your standard bike.

If you're a bicyclist who wants to travel with your bike for business or pleasure, but you still want to travel light, this bike is for you! It's the perfect bike for fast and light day touring while continent hopping.

This frame is made from comfortable, lightweight OX Platinum tubing, and comes in 4 different paint options at no extra charge. Custom paint jobs or colors are also available. And if that's not enough, we have 4 different decal options to choose from as well. It is available in 15 production sizes to fit men and women, or custom sizing for just a \$200 upgrade.

TRAVEL LIGHT

So, if you'd like to become an escape artist to perform your own disappearing act, why not give us a call to talk about the new Houdini bicycles from Rodriguez?



Campagnolo

Houdini Mirage \$2,699

Houdini Veloce \$3,199

Houdini Chorus \$4,799

Tube Set	OX Platinum
Fork	Profile carbon fiber
Shift Levers	Campagnolo Mirage Ergo 9x
Brakes	Tektro Dual pivot
Bottom Bracket	FSA Omega MegaExo
Cranks	FSA Omega MegaExo
Front Derailleur	Campagnolo Champ Triple
Rear Derailleur	Campagnolo Champ Triple
Hubs	Formula Sealed Bearing
Rims	Velocity Aerohead
Spokes	DT 14G
Tires	Serfas With Kevlar Belt
Handle Bars	Profile H2O
Head Set	Cartridge Sealed
Tape	Cinelli Cork
Seat Post	Alloy
Saddle	WTB or Planet Bike

OX Platinum
Profile carbon fiber
Campagnolo Veloce 10x
Campagnolo Veloce
FSA Omega MegaExo
FSA Omega MegaExo
Campagnolo Comp Triple
Campagnolo Comp Triple
Easton Vista
Easton Vista
Easton Vista
Serfas With Kevlar Belt
Profile H2O
Cartridge Sealed
Cinelli Cork
Carbon
WTB or Planet Bike

OX Platinum
Profile carbon fiber
Campagnolo Chorus 10x
Campagnolo Chorus
FSA SLK MegaExo
FSA SLK MegaExo
Campagnolo Chorus
Campagnolo Chorus
Easton Circuit/FSA RD-400
Easton Circuit/FSA RD-400
Easton Circuit/FSA RD-400
Vredstien Fortezza
FSA Carbon K-force
FSA Orbit X
Cinelli Cork
Carbon
Vitesse Highway Two



for more information and color photos visit us on the web

at www.rodcycle.com

Team Rodriguez



I told you this bike can go anywhere! Bruce traveled to prehistoric times on his Rodriguez UTB Tavel bike. To read he and his wife's (not pictured) complete story, visit our online customer scrapbook at www.rodcycle.com



Bye Bye Beige

Since joining R+E Cycles back in the 1980's, I've spent a whole lot of time sitting behind a computer. My personal computers work as a team....one at home, and one at the office. They communicate over a network that more or less keeps them synchronized.

Over the years, I've used a plethora of different computers to write, layout and produce our newsletter, catalogs, website etc... Although I have harnessed the power of several different models of computers, it occurred to me the other other day that, aside from being Apples, they all have had one cosmetic thing in common..... the color beige. Last week, I purchased 2 computers (one for home and one for work) to replace my old work horses. Neither one is beige :-). My new office computer (a 2004 iMac) looks more like a TV than a computer and my new Mac mini at home looks about the size of a book (just 8" X 8" X 2"). I won't be climbing in to these machines anytime soon.

I have always liked the beige, bulky, business look of these dinosaurs. Both of my current computers (manufactured in 1997-98) are huge and beige. The monitors are unapologetic, enormous monstrosities that I had to build special heavy duty stands to hold....

The computers themselves are extra huge too. The G3 Minitower (as Apple ironically named it that 10 years ago when it was manufactured) would make any modern tower shake in it's boots with it's intimidating, extra wide body. Even the desktop model I use at home would stack up in sheer size against any modern tower if you set it on its side. These machines are great! If you need to work on 'em, you just grab your tools and crawl inside.

Well, since an end of an era has been reached (ie. the beige beauties are heading out to pasture), and computer updates have consumed an enormous amount of my winter, I thought it fitting to pay a small tribute to the work horses that have dawned my desktops over the last 19 years. Thanks guys for a job well done!

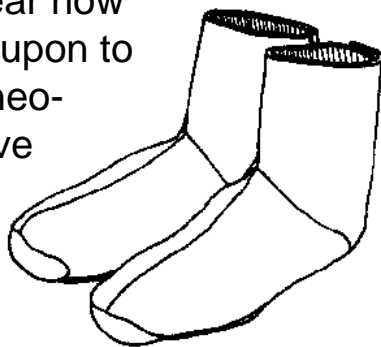
Office
 1988 Macintosh 512 (office only).
 1989 - 1996 Macintosh II with 21" Radius Black & White monitor
 1996 - 1998 Macintosh Powermac 7200
 1998 - 2003 Macintosh 6400
 2003 - 2007 Macintosh G3 Minitower

Home
 1992 - 1996 Macintosh IIfx with full screen Radius Pivot monitor
 1996 - 1997 Macintosh Quadra 660AV
 1998 - 2007 G3 beige desktop

If all goes well, as soon as this newsletter is done, the G3 minitower will be retired (I'm giving it to a friend as an iTunes and internet machine) and it's replacement will be installed as my last computer upgrade for the winter. See you on the other side!

MANAGE YOUR MONEY!

Buy your cold weather gear now and save big! Use this coupon to save 20% off any of our neoprene booties that we have in stock now!

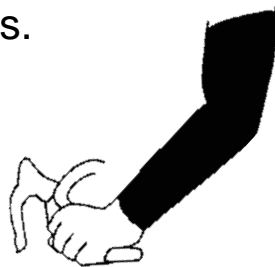


SAVE 20%

Limited to stock on hand. No cash value. Expires 4/21/2007

ARMED TO THE TEETH!

Well, to the shoulders anyway. Use this coupon to shop early, way early I hope, for a great pair of arm warmers.



SAVE 20%

Limited to stock on hand. No cash value. Expires 4/21/2007

GET A LEG UP.....

....on next winter with a great deal on leg warmers. I know it seems nuts to buy leg warmers in the spring, but it's even more nuts to pass up a deal like this one!



SAVE 20%

Limited to stock on hand. No cash value. Expires 4/21/2007

VISTA UPGRADE

Are you upgrading to Vista? Wouldn't it be nice if someone else did the install for you? Use this coupon to get one free Sigma BC506 reg. \$25) computer when you pay for the \$25 install! Maybe it's not Vista, but it'll be a lot of fun anyway.

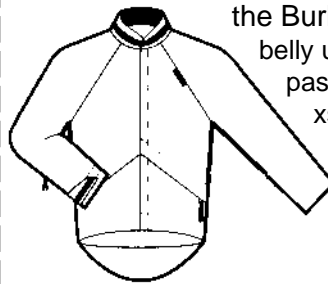


**FREE COMPUTER!!
 SAVE \$25**

Limited to stock on hand. No cash value. Expires 4/21/2007

END OF AN ERA :-)

Over the years, we've been your headquarters for the Burley jacket. I still haven't found a jacket I like as well as the Burley jacket, but unfortunately, they went belly up, and the Burley jacket is a thing of the past. We happen to have a few left in small and xs sizes, so if you fit the jacket, I suggest you come in and buy it. Reg. \$160

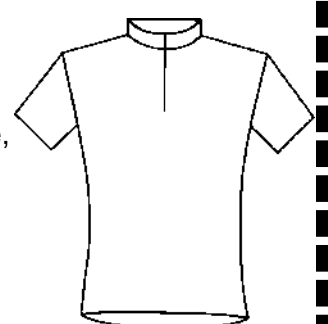


With Coupon Just \$85

Limited to stock on hand. No cash value. Expires 4/21/2007

NEW JERSEY

Here's a deal on a nice plain blue or red jersey. No flashy designs to clutter up your look. During the season, everyone can use a few extra jerseys. Short sleeve, breathable fabric, and just in time for spring. Reg. \$50



With Coupon Just \$39

Limited to stock on hand. No cash value. Expires 4/21/2007

PERFECT BLEND

COMFORT The Rodriguez S3 - The frames that 'STEEL' the show...

Our Rodriguez customers are loving their new S3 bikes! A Rodriguez S3 frame is as light or lighter than an aluminum, titanium or carbon fiber frame, but the ride is the same feel as that comfortable, nimble, high performance steel bike that you loved so much back in the day! You see, the S3 rides like a steel frame because it IS a steel frame! With a Rodriguez S3 hand-built frame, you don't have to compromise weight for comfort anymore.

"When I ordered the bike I stated that I wanted a bike that had both performance and comfort. You guys delivered!.....My sincere thanks for building one of the best bikes on the planet!"
Mike M. - after riding 230 miles on his Rodriguez S3

You won't believe your finger! Come by the shop and lift a complete steel S3 Rodriguez bike that weighs less than 14 pounds (pedals, bottle cages and all), ready to ride!

Open up a can of whoop ass, and hit the road with a vengeance! The Rodriguez S3 is your bike if you'd like to send your buddies 'off the back' for a bit. Your friends will marvel as you step off your comfortable, steel frame after a long ride, and can still sit down for a beer without screaming in pain. Handbuilt with True Temper S3 steel (made in the USA) tubing, Campagnolo Chorus Carbon equipment, handbuilt Spartacus Pro wheels, Alpha Q fork, and your choice of 4 stock paint designs (plus custom), it's ready to be at the front of any pack.

PERFORMANCE



Rodriguez S3 Veloce
\$3,299

Rodriguez S3 Chorus
\$4,699

Rodriguez S3 Record
\$6,499

Frame
Fork
Rear Derailleur
Front Derailleur
Shift/Brake levers
Brakes
Crank
Head Set
Wheels
Bars
Stem
Bar tape
Tires
Seat post
Seat

True Temper S3
Profile AC
Veloce
Veloce
Veloce Ergo 10x
Veloce
FSA Omega MegaExo
FSA cartridge bearing
Easton Vista
Profile H2O
Profile Boa
Black Cinelli Cork
Serfas Seca
Alloy
WTB Speed V

True Temper S3
Profile AC
Chorus Carbon
Chorus
Chorus Carbon Ergo 10x
Chorus
FSA SLK MegaExo
FSA Orbit X
FSA Rd-400/Easton Circuit
FSA K-Force Carbon
FSA OS115
Black Cinelli Cork
Vredstein Fortezza Tri-comp
Origin 8 Carbon Fiber
Vitesse

True Temper S3
Profile AC
Record Carbon
Record
Record Carbon Ergo 10x
Record
FSA MegaExo Ceramic
FSA Orbit X
Campagnolo Eurus
FSA K-Force Carbon
FSA OS115
Black Cinelli Cork
Vredstein Fortezza Tri-comp
FSA K-Force Lite
Vitesse

Campagnolo



Rodriguez

for more information and color photos visit us on the web

at www.rodcycle.com

Team Rodriguez



Stacia on her Rodriguez S3 during 'her best Ironman ever' in Hawaii. Read more in our online customer scrapbook at www.rodcycle.com

We Have The Best Customers In The World

Over the winter, a few different organizations have approached us about team sponsorship. Apparently some shops and manufacturers give extra service to people that race. We've come to realize that our team is really our customers. Why not give the "stop everything and help out" service to our everyday customers that support our shop? Throughout this newsletter you'll see tributes to just some of our customers that we consider to be Team Rodriguez. If you have a great story to tell or some photos you'd like to share, send them my way. We'd love to have you as part of our customer scrapbook as well.

Team Rodriguez



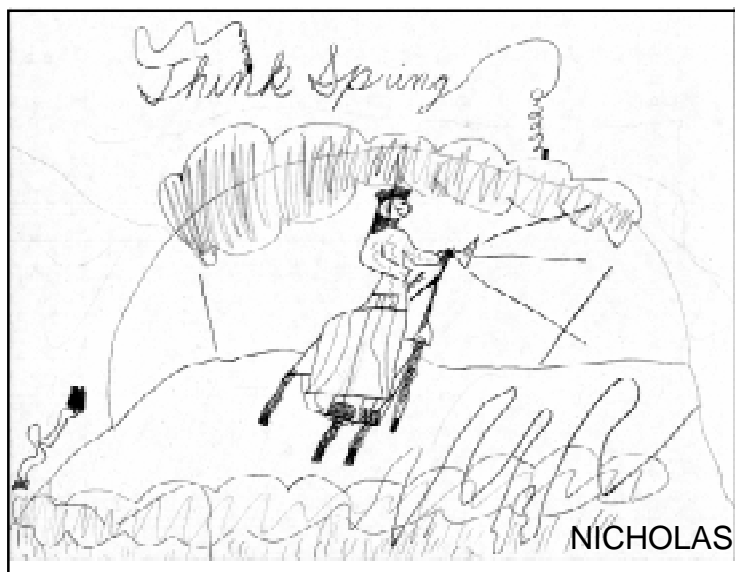
Bruce E. smiling on RAMROD with his new Rodriguez S3. Read his whole story in our online scrapbook at www.rodcycle.com

As spring bounces back in and the bicycle season picks up again, I'd like to take a moment to thank all of you for choosing us to be your bike shop. The last 4 seasons have truly been sensational.

As a small manufacturer and bike shop, we couldn't survive without the support of our customers. Our advertising budget is limited to 4 or 5 newsletters each year, a website and a few very small ads in the Bicycle Paper. We rely heavily on word of mouth as a main form of getting the word out. Every day a new customer comes into the shop and says that a friend of theirs sent them in. Thanks again, and I hope to have many more seasons like the last few.

Thanks for making our jobs so much fun!

-Dan



A LONG AWAITED SPRING RETURNS

ARE YOU METRO NATURAL?

If you live in Seattle you are. That's the new slogan our Mayor has coined to replace 'Jet City'. In celebration of the new tag line, we're offering the original (2006 model) Metro handle bar bag at a great discount! It's compact, quick release, stylish, and comes with a carrying strap. Reg. \$40

SALE \$29



Limited to stock on hand. No cash value. Expires 4/21/2007

STUCK IN THE MUCK!

Do you ever get stuck in the muck? Use the headlands mudslide emergency strap on fender to keep the muck off of you! Easily velcros to your downtube and keeps lots of muck from reaching your 'New Jersey'. It even works well on mountain bikes with suspension forks. Reg. \$12



With Coupon Just \$8.99

Limited to stock on hand. No cash value. Expires 4/21/2007

FORTYAND FABULOUS!

If you ride 40 centimeter handlebars, we've got a deal for you! We have a few pair of FSA K-Wing, incredibly comfortable handlebars (yes the ones we've been telling you about) that are slightly used. They are in excellent shape, and come with warranty, and you'll save 50% on the original price! Reg. \$280 (or \$500 installed)



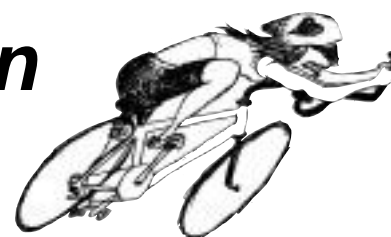
With coupon Just \$140 (or \$320 installed)

Limited to stock on hand. No cash value. Expires 4/21/2007

BREAK WIND LIKE A PRO!

Get ready for triathlon season now! Profile Airstrike clip on aero bars will mount right to your existing bars and give you the ability to 'break wind like a pro'. Reg. \$100

With Coupon Just \$79



Limited to stock on hand. No cash value. Expires 4/21/2007

SHADES OF GRAY

Shades of gray is sometimes what you get in the Seattle summer. Not to worry though, Serfas sunglasses come with 4 pair of lenses so you'll have a pair of shades for any lighting condition. Reg. \$50



With Coupon Just 44.99

Limited to stock on hand. No cash value. Expires 4/21/2007

A BUG IN YOUR EAR

Helmuffs are the best way to keep bugs out of your ear. Maybe it's not bugs your worried about. Helmuffs keep the cold out too, and even in the spring it's still cold in the mornings. Helmuffs stay on your helmet straps and keep your ears toasty. Reg. \$15



With Coupon Just 11.99

Limited to stock on hand. No cash value. Expires 4/21/2007

MILESTONE

Over the last 3 decades our customers have come to us for proper fitting handmade Rodriguez bicycles. This has

INDIVIDUAL

become a specialty of ours. The last three years we have seen quite a few customers who wanted something more specific than a great fit or a custom paint job. These customers wanted us to build them the 'milestone bike' that they have fantasized about for years.

Some were wedding gifts, anniversary gifts, retirement gifts, and some were just because they wanted the best. Since we have a complete frame building shop, a phenomenal paint shop, and probably the most experienced team in the country, it made sense that they would come to us.

Introducing the Trillium...

The Trillium line is more than a custom size and paint job. This is the bike you've been dreaming of all of your life. Each Trillium is built for one individual rider to the precise specifications they desire. Paint, parts, materials, even decals... nothing is left to defaults. We've built Trillium Cyclocross bikes, travel bikes, single speed mountain bikes, as well as 14 pound road bikes.

Since every Trillium is different, we have no specifications to list here. Visit www.trilliumcycles.com for high resolution photos of some of the Trilliums we've built...that is...if you dare.

PRECISE



 *Trillium*



 *Trillium*

for more information and color photos visit us on the web

www.trilliumcycles.com

The Trillium Outlaw

Sorry professional racers, this bicycle has been banned by the UCI. It's considered an unfair advantage to race a bicycle this light!

Do you need a carbon fiber frame to get your bike weight below 15 pounds? Most people think so. How about tubular tires (the kind that are glued onto the rim)? Sure they're really light, but they're not practical for everyday riding. What about tearing the leather off of your seat, or riding without water bottle cages? That would lighten up the bike, right? How about drilling extra holes in the components, or riding with downtube shifters instead of new integrated shifting? Believe it or not, these are just some of the things that people will do to make their bike light....really light....like too light to race professionally.

Scott started talking with me about making a really light Rodriguez Trillium bike to have on the shop floor this season. A bike with all stock parts, and no crazy modifications (no extra holes drilled in the components, and the leather still on the seat). We've built a few of these for customers, but never one to put on the floor. When I over heard some guys in a coffee shop talking about their 17 and 16 pound carbon fiber bikes as if they were the lightest bikes ever built, I realized that we should have one of these on the shop floor for people to see.. Scott was right. It's one thing for us to tell you that we can build a sub 15 pound bike (including pedals and bottle cages), and it's another thing to lift it for yourself, and see it weighed on a digital scale right before your eyes.

Paper Doesn't Refuse Ink

My Father-in-law always says "paper doesn't refuse ink". I've learned that he's right. Just because it's printed in a catalog, doesn't mean that a bike is as light as it says. I've seen bikes that weigh over 3 pounds more than their stated catalog weight. On occasion, I've pressed the issue with the sales rep. They usually said something like "I'm sure that was the weight before pedals" or "that was probably the weight for a smaller sized frame" or "you can't trust that scale". (I know my scale was right)

Nothin' Up Our Sleeve

This bike is one of our medium sizes (roughly equivalent to a 54cm frame), has 700c clincher wheels, Speedplay pedals just like the ones that many of us ride everyday, and a water bottle cage on it before weigh in. The shifters are modern integrated design, and all the components are stock without modifications.

Trust but Verify

If you've got friends that are constantly telling you about their super light weight carbon fiber or titanium bike, come by the shop with them sometime, and we'll weigh it for them on our digital scale. That way, they can be sure that it's lighter than a steel bike (wink wink), and that their sacrifice of ride quality was worth it.

No Sacrifice!

The Trillium Outlaw gives you all the bragging rights of having the lightest bike, as well as the most comfortable and best fitting bike in the pack. The Outlaw rides comfortable like a steel bike because it is a steel bike.



6 year old, 39 pound Grace, lifting the Trillium Outlaw all by herself



PUMP ACTION!

The Joe Blow Pro is by far the fastest pump in the west! It's our favorite and soon to be your favorite. We're making you an offer you can't refuse. Reg. \$70

SALE \$59.99



Limited to stock on hand. No cash value. Expires 4/21/2007

GET A GRIP!

Get a grip and save \$\$ while you do it! Use this coupon to get a pair of Rodriguez Gel padded cycling gloves for just \$19.99. Reg. \$25

Rodriguez Gel Gloves \$19.99



Limited to stock on hand. No cash value. Expires 4/21/2007

SHAKIN' IN YOUR BOOTS?

If you're shakin in your boots, you're going to want a pair of Superfeet insoles. I've got them in my boots right now, and my feet are resilient. Reg. \$34.99

With Coupon Just \$29.99

Limited to stock on hand



Limited to stock on hand. No cash value. Expires 4/21/2007

FIVE FINGER DISCOUNT

Use this coupon to get a pair of Airus winter gloves for the regular price of just \$34.99 and we'll give you a second pair for FREE!!

FREE Winter Gloves \$35 Value



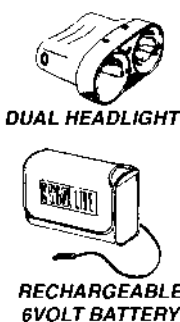
Limited to stock on hand. No cash value. Expires 4/21/2007

SECURITY LIGHTS

Headlight season is just about over, so you can save big now for next winter. Use this coupon to save 25% off any Cygolite product we have in stock (sorry no special orders).

SAVE 25%

Limited to stock on hand. No cash value. Expires 4/21/2007



HOLLYWOOD HAULS

A Hollywood bike rack is a great, easy way to haul your bikes around. Use this coupon to get one for just \$55! That a savings of \$15. Reg. \$60

SAVE \$15!!

Limited to stock on hand. No cash value. Expires 4/21/2007



TOGETHER

Tandem riding, for the most part, is about having

EXPERIENCE

fun. Whether you're riding with your children, spouse, or just a good friend, a tandem equalizes the abilities of the riders and makes the ride more about the experience.

At R+E Cycles, we have 34 years of designing, building and riding tandems behind us.

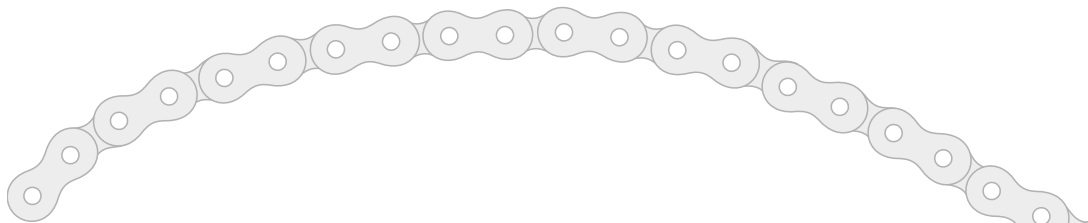
This has given us a broad range of experience which enables us to create the perfect tandem for you. I've always said that when you buy a bike, you're also buying a relationship with the shop and the manufacturer of your bike. This is especially true with tandems. When you take a personalized test ride with us, you'll see why RODRIGUEZ tandems have stood the test of time!

Comfort is the key to a good tandem. If the fit isn't comfortable, it doesn't matter what the components are. At R+E Cycles, comfort is key that drives the design. We strive to achieve the perfect fit for each of you and the proper level of "cush" depending on your needs.

The Rodriguez Toucan tandems have all of that 'hand-built' quality that you've come to know us for, and are an excellent value. Like all Rodriguez bikes, every Toucan tandem is hand-built, one at a time, right here in Seattle. We guarantee fit and fun on every one. 3 production sizes + custom size for just \$400 extra. 4 paint options + custom and 4 different decal styles. Wow! That's a lot of different options.

FUN

The Toucan comes in standard, and a travel version. The travel version uses the same S&S couplings as the Houdini and W² Adventure to pack down easily into 2 26"X26" airline standard suitcases.



Toucan Sport \$3,899

Toucan SL \$4,499

- Head set
- Brake/Shift levers
- Cranks
- Brakes
- Stoker stem
- Front Derailleur
- Rear Derailleur
- Bar tape
- Tires
- Bottom brackets
- Rims
- Rear Hub
- Front hub
- Wheels
- Handle bars
- Seat Posts
- Spokes
- Cogs
- Seats

- Cartridge Sealed Bearing
- Campagnolo Mirage Ergo 9x
- Sugino Tandem
- Alloy Cantilevers
- Rodriguez adjustable
- Shimano Sora
- Campagnolo Champ
- Cinelli Cork
- Serfas Kevlar Belted
- Shimano Sealed
- Weinman Zac 19
- Phil Wood Cassette
- Phil Wood
- Handbuilt w/3- year warranty
- Profile H2O
- Alloy 27.2
- DT stainless steel
- Hyperglide cassette
- WTB Speed V/Planet Bike

- FSA Orbit XL II
- Campagnolo Veloce Ergo 10x
- Sugino Tandem
- Alloy Cantilevers
- Rodriguez adjustable
- Shimano Sora
- Campagnolo Comp
- Cinelli cork
- Serfas Kevlar Belted
- Phil Wood
- Velocity Aero Heat
- Phil Wood Cassette
- Phil Wood
- Handbuilt w/3- year warranty
- Profile H2O
- Alloy 27.2
- DT stainless steel
- Hyperglide cassette
- WTB Speed V/Planet Bike



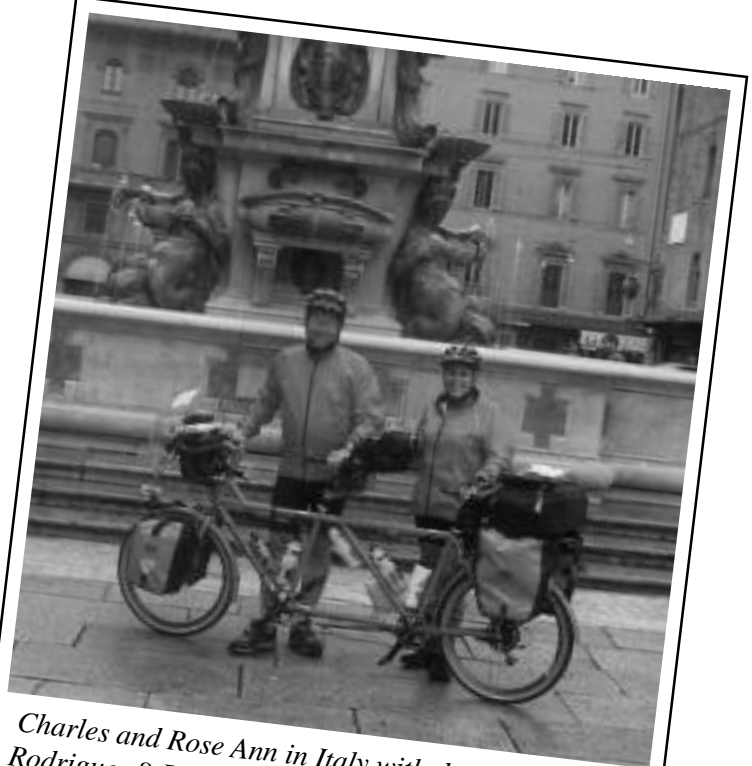
for more information and color photos visit us on the web

at www.rodcycle.com

RIDING IS MORE FUN IN PAIRS



The Shuharts on their Rodriguez travel triple (Christmas card photo)
See more in our customer scrapbook at www.rodcycle.com



Charles and Rose Ann in Italy with their very orange Rodriguez 8-Ball convertible travel tandem. See more in our customer scrapbook at www.rodcycle.com



Above:
The Gohmans on their Rodriguez 8-Ball convertible travel tandem.
Left:
The Gohman's tandem in it's single status.
Read more in our online scrapbook at www.rodcycle.com



The Trickle Nickel (8-Ball travel tandem) visits Denmark



Dave and Joanne on their trip of a lifetime. Lots of great stories from Dave and Joanne in our online customer scrapbook at www.rodcycle.com

MESSAGE FROM MARS

An R+E Cycles customer favorite is this cool flashing tail light that will bolt right onto your rear rack. It also comes with a belt clip if you prefer to clip it right onto your bag instead. The Mars 2.0 tail light is reg. \$20

SALE \$14.99

Limited to stock on hand. No cash value. Expires 4/21/2007



IN THE GUTTER!

Your sweat will be in the gutter with a Halo headband. Halo headbands have a 'gutter' like thing on them to keep the sweat from just running down into your eyes. That is...if you sweat. Reg. \$15

SALE \$12.99

Limited to stock on hand. No cash value. Expires 4/21/2007



UPGRADE YOUR CO-MOTION TANDEM



If you own a Co-Motion tandem and you've been wondering if one of the new Bushnell 140 gram, easy to adjust eccentric will slide right in there, we've got good news for you. So many of you Co-Motion owners were inquiring that I finally called Co-Motion to verify their spec. I'm not

familiar with the eccentric that Co-Motion uses, but one thing I'm told is that it is difficult to adjust when used with a modern Mega-Exo style bottom bracket. The Bushnell bottom bracket takes care of this problem, and lightens your bike up as well. Read more about the Bushnell eccentric on our website www.rodcycle.com under 'stuff we make'.



The part usually retails for \$130 plus installation. We're going to offer a competitive upgrade price of just \$120 including installation for any Co-Motion conversion. Call 206-527-0360 to schedule your tandem for a conversion.

**Competitive Upgrade
Just \$120**

LIMITLESS



R+E Cycles began as a custom bike shop. We've been building custom bicycles for 34 years now. Although we have several models of production bikes in our line-up, we've never lost focus on the custom area of the business. In fact, in 2006, we built more custom bicycles than we ever have in the past. So, if you don't see what you need in this brochure, always remember that at R+E Cycles, the possibilities are limitless.

If it has to do with bicycles, we've probably built one. This winter we built a 'bicycle built for 4', which converts to a bicycle built for 3, or 2, and the whole thing comes apart for packing into suitcases. Last year we built a travel triple that can convert to a tandem, and fit into travel suitcases (pictured below). We've built nearly a dozen of our 8-ball convertible tandems to date.

Below are a few highlights of some of the bikes that you might now be aware that we build.



Kevin, Dominik and Susan with their Rodriguez travel triple/tandem on tour in France. Read about their travels in our online customer scrapbook at www.rodcycle.com



Custom Track Bike With Faux Lug Effect

Single Speed Mountain Bike With Bushnell Adjustable Bottom Bracket



15 Pound Triathlon Race Bike

Fully Lugged Classic Road Bike With Full Internal Cables and Stainless Head Badge

